

Adult Social Care and Health Integration

People Scrutiny Panel

Monday, 15 July 2024

Erik Scollay, Director of Adult Social Care and Health Integration

The (basic) ASC key legislation:

Legal literacy is key; we work within many pieces of legislation but the absolute fundamentals are (in no particular order):

- 1. The Care Act 2014 (inc. the wellbeing principle for eligibility)**
- 2. The Mental Capacity Act 2005**

(Note: these are Council duties, not Adult Social Care duties)

The (basic) ASC key legislation:

“The general duty of a local authority, ... in the case of an individual, is to promote that individual’s wellbeing”.

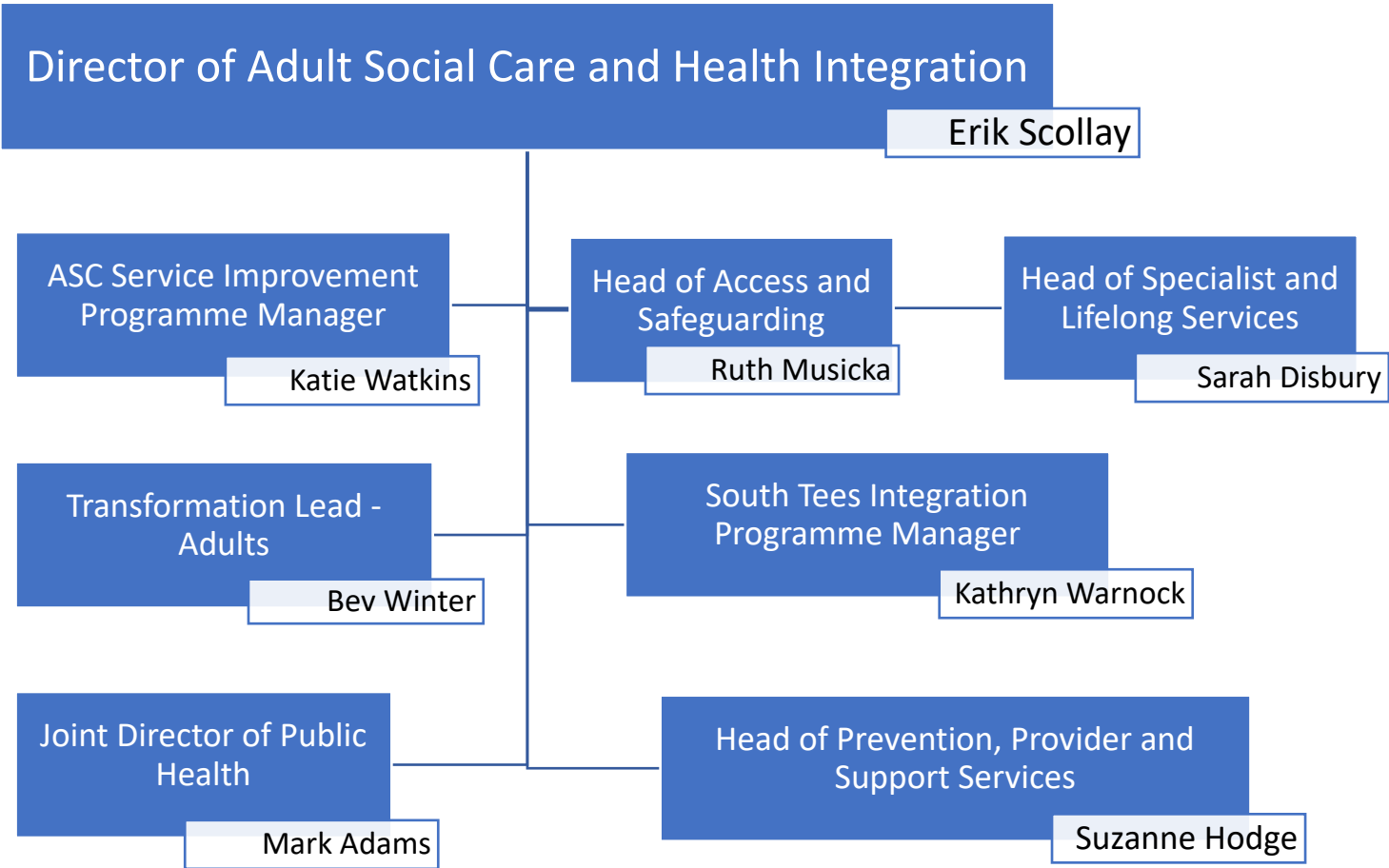
Wellbeing has a broad definition; this is both empowering and challenging

Needs which meet the eligibility criteria: adults who need care and support

2.—(1) An adult’s needs meet the eligibility criteria if—

- (a) the adult’s needs arise from or are related to a physical or mental impairment or illness;
- (b) as a result of the adult’s needs the adult is unable to achieve two or more of the outcomes specified in paragraph (2); and
- (c) as a consequence there is, or is likely to be, a significant impact on the adult’s well-being

The Care and Support (Eligibility Criteria) regulations 2014



29.05.2024 Org Chart v1.0

Who we are:

- Access and Safeguarding Team
- Hospital Social Work Team (inc. weekend service)
- East and West Locality Social Work Teams
- Learning Disability and Transitions Social Work Team
- Community Mental Health Team (inc. former Psychosis and Affective Disorder Teams)
- Older People's Mental Health Team
- Forensic Mental Health/Learning Disability Team
- Deprivation of Liberty Safeguards Team (BIAs)
- Approved Mental Health Professional Service (AMHP)s
- Estates Team
- Tees Community Equipment Service
- Occupational Therapy Team

Who we are (cont.):

- Homelessness Team
- Domestic Abuse Support
- Levick Court
- The Orchard Day Centre
- North Ormesby Day Centre (Frailty and Dementia)
- Community Inclusion Service
- Autism Day Centre
- Connect Service
- Reablement Team / Middlesbrough Mobile Reablement Unit
- Staying Put Agency (inc. Digital Inclusion developments)
- MAMMS (Handyperson) Scheme
- Service Improvement Programme
- South Tees Integration Programme

Key Relationships:

Key relationships (external)...

NHS Integrated Care System

Tees, Esk and Wear Valleys NHS Foundation Trust (TEWV)

South Tees Hospitals NHS Foundation Trustees, Esk and Wear Valleys

Cleveland Police

Voluntary and Community Sector / MVDA

Independent Providers

Tees Safeguarding Adults Board (TSAB)

Key relationships (internal)...

Public Health

Environment and Community Services - Community Safety

Children's Services

Finance Directorate - ASC Finance, Financial Assessment and Welfare Rights

Finance Directorate – Contracts and Commissioning

Priorities (within ASC draft vision and strategy):

- Priority 1 - promoting wellbeing and personal and community resilience.
- Priority 2 - maximising recovery and promoting independence so people can live independently in their own communities for as long as possible.
- Priority 3 - improving the quality of life for people with care and support needs.
- Priority 4 - providing choice and control for people who have care and support needs.

Key Issues and Challenges:

- Impending Care Quality Commission (CQC) inspection
- Financial Imperative to deliver ASC transformation plan (£5.75M in 24/25) – modernisation including “ The Three Conversations” approach / digital resources.
- Increasing complexity
- Rising/latent demand
- Recruitment / Staffing
- North East and North East Cumbria ICB (NENC) Changes/ relationship with Place Team
- Need to push towards greater focus on prevention – Locality Working / knowing our communities / reflecting our communities.
- Homelessness pressures
- Domestic Abuse prevalence
- Market sustainability – Care Act duty
- Understanding demand and commissioning approaches

Questions?